

This week, we have been learning to read and spell words containing 'ea' saying /ee/.

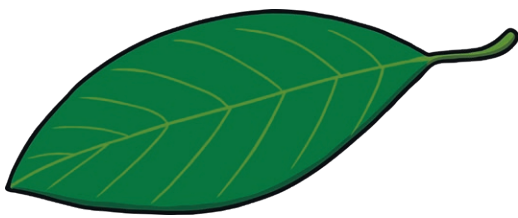


Level 5

## Top Tip

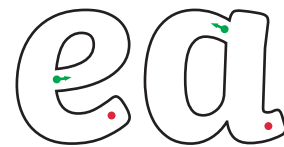
The grapheme 'ea' makes the same sound as 'ee'. There is not a consistent rule for when to use 'ee' or 'ea' so you just need to learn which grapheme to choose.

## Picture



leaf

## Formation



Finish at the red dot.

## Word List

Can you read these words?

**preal**

**seat**

**keam**

**bead**

**sea**

**meat**

**least**

**zeat**

**heap**

**gleat**

**treat**

**read**

Some are real words and some are nonsense words. Circle the real words.

## Common Exception Words

Mr

Mrs

## Spelling Words

were

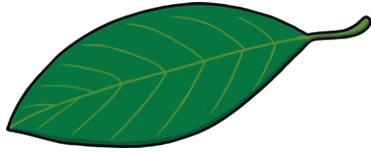
there

# Home Learning Challenge



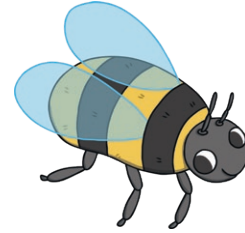
Level 5

Can you circle the correct spelling for each picture?



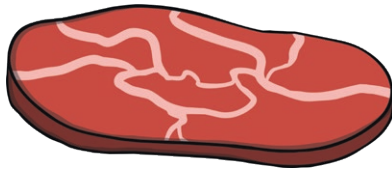
leaf

leef



bea

bee



meat

meet



jeans

jeens



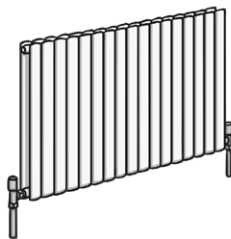
sea

see



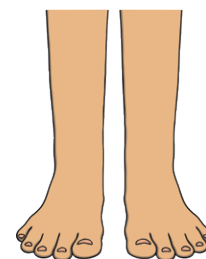
seat

seet



heater

heeter



feat

feet