



Pupil Workbook

Level 6 Week 27

Name: _____



1. Write the common exception words.

Which is the tricky part of the word? Why is that part tricky? Colour the tricky part in a different colour. Write the word two more times.

straight

touch

2. Spell the missing words.



A fact book is a non-_____ book.



I try to eat five _____ of fruit and vegetables every day.



He put the coin in the _____ bucket.

3. Answer the questions.

Read these silly questions and answer them by circling 'yes' or 'no'.

Can a fish drive a car to a destination? yes no

Do you like the smell of baby lotion? yes no

Is there a volcanic eruption in your ice cream? yes no



1. Read and match.

Read the clues and draw a line to match the clue to the correct picture.

Clue 1

I work at the train station. I help the passengers to get to their destinations. If there is a hold up at the junction, I tell everyone over the tannoy.

Who am I?



Clue 2

I cast spells and make potions. You might read about me in a fictional book like Hansel and Gretel.

Who am I?



Clue 3

I help you get to your destination and find your way to new places. You can enter the location and I will give you directions.

What am I?



Clue 4

My inventions are still used today. I helped develop the light bulb, phone and batteries.

Who am I?





Focus: **tion**

1. Read the story.

Highlight all of the words that contain tion.

tion

Little Monster and his mum were going on holiday. Mum Monster had picked a nice destination with lots of slime and sun. The house they were staying in was in a great location, right next to Monster Beach. Little Monster was very excited as they were going to go on a train to get there.

They arrived at the train station just before lunchtime. Mum went to the ticket desk to get the tickets.

“I’m afraid that train is full,” said the monster at the desk. “You could go in a different direction to get there, or the other option is to wait for a later train.”

“We can wait for the later train,” said Mum, smiling. “We’ll go to the coffee shop for lunch.”

At the coffee shop, the monster waitress showed them to a table in a section with a big window. Little Monster could see the trains at the platforms through the window. Mum ordered a little portion of fish and chips for Little Monster and a big portion for herself.

Mum Monster had a book about the place they were going to. It had photos and descriptions of all the things they would see when they were there. Little Monster was very excited as they looked through it.

“I wish I had a magic potion so we could be there now!” said Little Monster.

“We don’t need a magic potion,” laughed Mum. “Our train is here. Let’s go!”

2. Write the words in a sentence.

Choose two words you have found and write them in a new sentence.

Word	Sentence



1. Write the common exception words.

Which is the tricky part of the word?

straight

touch

2. Write the words in sentences.

Choose a word to complete each sentence.

junction eruption lotion
actions donation

Mum rubbed _____ onto the baby's arms and legs.

There was a huge _____ from the volcano.

She put a _____ of money in the charity bucket.

The car went left at the _____.

The teacher read the story and did lots of _____ with her hands.



1. Write the sentence your teacher says.

Think carefully about which graphemes to use to spell the words.

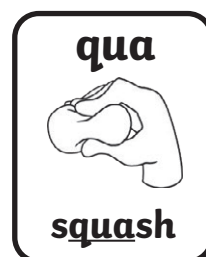
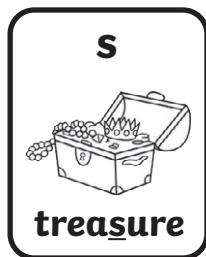
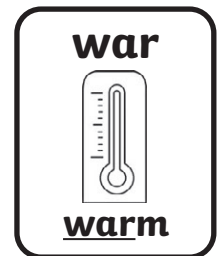
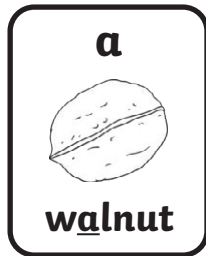
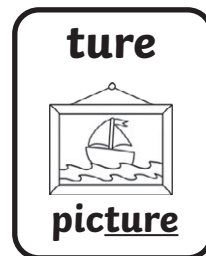
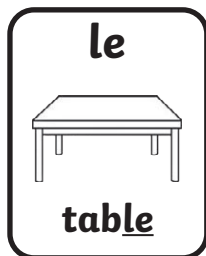
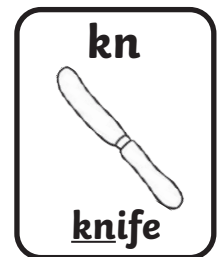
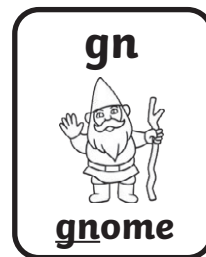
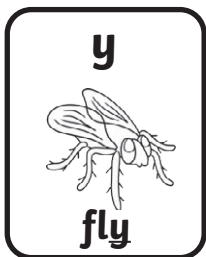
How confident do you feel?





1. Write your own silly sentence.

Use words containing tion.





2. Practise spelling the focus words.

Look and Say	Look, Say and Write	Cover and Write	Check
action			
motion			
description			
station			
section			
adoption			
portion			
fiction			
straight			
touch			