

This week, we have been learning to read and spell words containing 'u_e' saying /yoo/.



Level 5



Top Tip

When u and e are cheeky partners and have a letter sitting between them, they say /yoo/, e.g. tube, use.

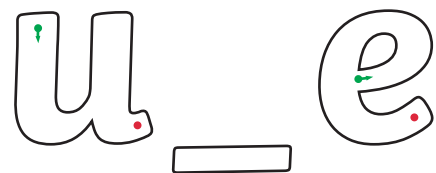
This split digraph is tricky, because sometimes they **do** sit together.

Picture



cube

Formation



Finish at the red dot.

Word List

use
fume

cube
tube

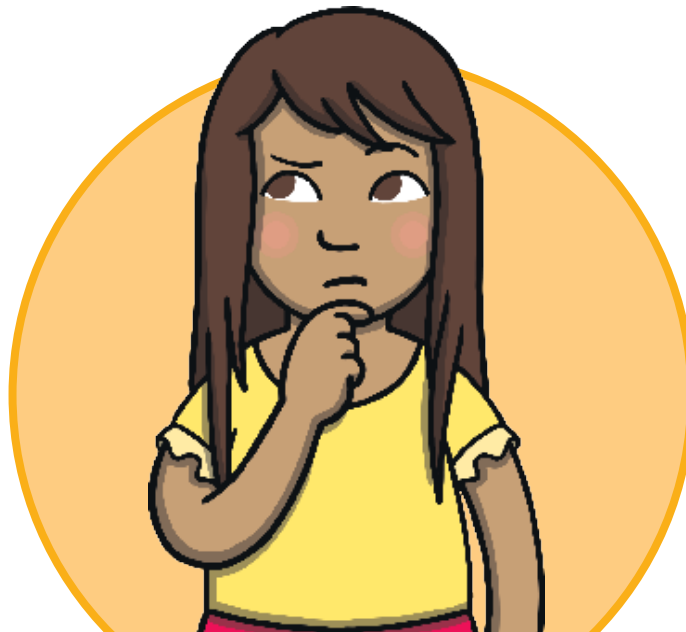
Common Exception Words

called
asked

This week, we have also been learning to read and spell words containing 'e_e' saying /ee/.



Level 5



Top Tip

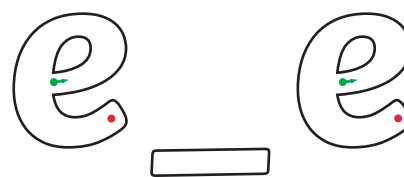
When e and e are cheeky partners and have a letter sitting between them, they say /ee/, e.g. these, theme.
This split digraph is tricky, because sometimes they **do** sit together.

Picture



trapeze

Formation



Finish at the red dot.

Word List

these
even

theme
complete

Spelling Words

what
could

Home Learning Challenge



Level 5

u m u e y e w o x d
s e b v i s a y z c
e u x y e v e n d o
t c h t k f u m e m
u y t h r b n c v p
b c z h a e v u e u
e b n h e t m b v t
k y u k l m t e u e
d c o m p l e t e o
v q p t q q l e z t

use
even
complete
tube

fume
extreme
cube
theme

compute
eve



Answers



Level 5

u m u e y e w o x d
s ~~e~~ b v i s a y z c
e u x y ~~e v e n~~ d o
t c h t k ~~f u m e~~ m
u y t h r b n c v p
b c z h a e v u e u
e b n h e t m b v t
k y u k l m t ~~e~~ u e
d ~~c o m p l e t e~~ o
v q p t q q l e z t

use complete fume cube compute
even tube extreme theme eve