

- 1 Dora makes a number on a place value chart.

Th	H	T	O

- What number has Dora made?
- Add 3 ones to Dora's number.
What number do you have?
- Add 2 tens to Dora's number.
What number do you have now?
- Subtract 2 hundreds from Dora's number.
What number do you have now?
- Add 5 thousands to Dora's number.
What number do you have now?

- 2 Work out the calculations.

Use the place value chart to help you.

1,000s	100s	10s	1s
5	3	7	8

- $5,378 + 200$
- $5,378 + 20$
- $5,378 + 2,000$
- $5,378 - 6$
- $5,378 - 60$
- $5,378 - 3,000$
- $300 + 5,378$
- $5,378 - 300$



- 3 Work out the calculations.

- $6,058 + 1$
- $6,058 + 20$
- $6,058 + 2$
- $6,058 + 30$
- $6,058 + 3$
- $6,058 + 40$
- $6,058 + 4$
- $6,058 + 50$
- $5 + 6,058$
- $60 + 6,058$

- 4 Mo is going to add 100 to each number.

Circle the numbers where the 1,000s will change.

2,450 3,928 4,180 5,905 972

What do you notice?

- 5 Mr Hall has £1,342 in the bank.

- Mr Hall puts in £500 more.
How much money does he have in the bank now?
- Then he puts in £600 more.
How much money does Mr Hall have in the bank now?
- Then Mr Hall takes out £60
How much money does he have in the bank now?



3 Work out the calculations.

- | | |
|----------------|-----------------|
| a) $6,058 + 1$ | b) $6,058 + 20$ |
| $6,058 + 2$ | $6,058 + 30$ |
| $6,058 + 3$ | $6,058 + 40$ |
| $6,058 + 4$ | $6,058 + 50$ |
| $5 + 6,058$ | $60 + 6,058$ |

4 Mo is going to add 100 to each number.
Circle the numbers where the 1,000s will change.

2,450 3,928 4,180 5,905 972

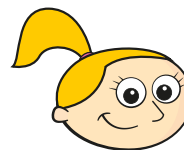
What do you notice?

5 Mr Hall has £1,342 in the bank.

- a) Mr Hall puts in £500 more.
How much money does he have in the bank now?
- b) Then he puts in £600 more.
How much money does Mr Hall have in the bank now?
- c) Then Mr Hall takes out £60
How much money does he have in the bank now?



6 Is Eva correct?



If I keep taking ten away from the number 2,562 only the tens will change.

7 Write the missing numbers.

- | | |
|------------------------------|------------------------------|
| a) $6,951 - \square = 6,921$ | c) $1,706 + \square = 1,766$ |
| $6,951 - \square = 6,881$ | $1,706 - \square = 906$ |
| b) $6,421 - 700 = \square$ | d) $3,500 - \square = 2,700$ |
| $6,421 + 700 = \square$ | $3,500 - \square = 3,430$ |

Which calculations were easy to work out?

Which were more difficult to work out?

8



To add 3,812 and 1,400 together, you can add 1,000 to 3,812 and then add 400

- a) Use Ron's method to work out $3,812 + 1,400$
Could you have worked this out mentally?
- b) Use Ron's method to complete the calculations.
- $1,780 + 2,200$
 $3,084 + 720$
 $591 + 2,820$